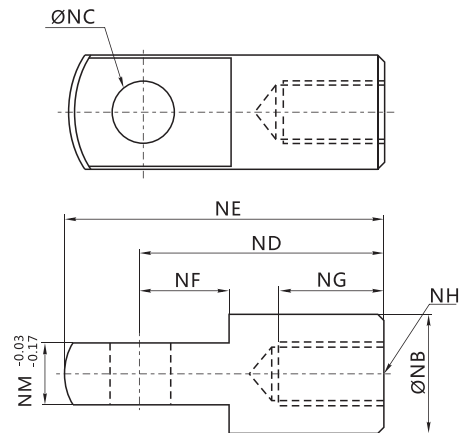


COMO ORDENAR			
DNC/DG1	-	50	- I
SERIE	-	ÉMBOLO	- TIPO ACCESORIO
DNC		32MM	I = HORQUILLA MACHO
DGI		40MM	Y = HORQUILLA HEMBRA
		50MM	F = JUNTA FLOTANTE
		63MM	U = HORQUILLA ARTICULADA
		80MM	
		100MM	
		125MM	
		160MM	
		200MM	



I = HORQUILLA MACHO

Diámetro	32	40	50	63	80	100	125	160	200
NA	19	25.4	32	32	44.4	44.4	55	70	70
NC	10	12	16	16	20	20	30	35	35
ND	40	48	64	64	80	80	110	144	144
NH	M10X1.25	M12X1.25	M16X1.5	M16X1.5	M20X1.5	M20X1.5	M27X2.0	M36X2.0	M36X2.0
NJ	12	20	22	22	30	30	-	-	-
NK	18	23	30	30	39	39	-	-	-
NM	10	12	16	16	20	20	30	35	35
NP	20	24	32	32	40	40	54	72	72
NQ	52	62	83	83	105	105	148	191	191
PA	25	32.8	39.3	39.3	53.3	53.3	64	80	80
PB	19.5	26.5	33	33	45	45	55.6	70.6	70.6
NB	20	24	32	32	40	40	-	-	-