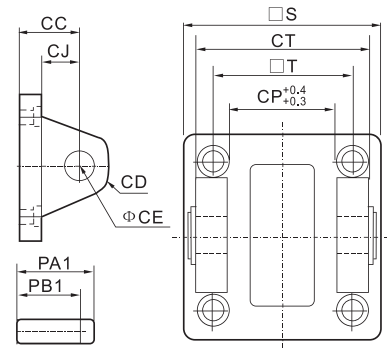
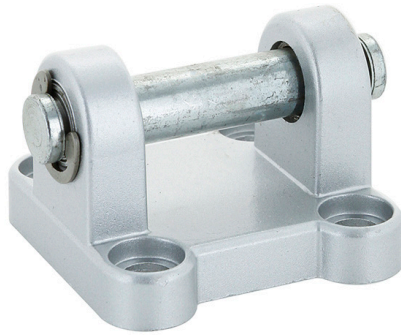


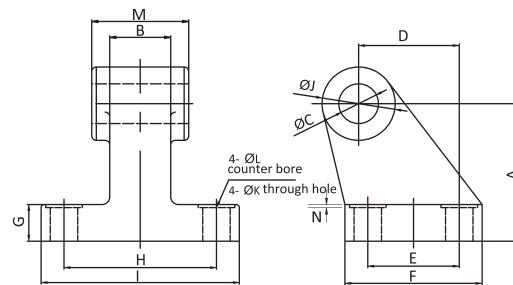
Montajes DNC-DGI

DNC-DGI



CB = FIJACIÓN TRASERA HEMBRA

| Diámetro | S | PB1 | CC | CD | E | CE | CT | PA1 | T | CP |
|----------|-----|-----|----|----|----|----|----|-----|------|----|
| 32 | 45 | 45 | 22 | 10 | 12 | 10 | 26 | 51 | 32.5 | 26 |
| 40 | 52 | 52 | 25 | 12 | 15 | 12 | 28 | 59 | 38 | 28 |
| 50 | 65 | 60 | 27 | 12 | 17 | 12 | 32 | 67 | 46.5 | 32 |
| 63 | 76 | 70 | 32 | 15 | 22 | 16 | 40 | 78 | 56.5 | 40 |
| 80 | 94 | 90 | 36 | 16 | 24 | 16 | 50 | 98 | 72 | 50 |
| 100 | 112 | 110 | 41 | 20 | 25 | 20 | 60 | 120 | 89 | 60 |
| 125 | 139 | 130 | 50 | 24 | 33 | 25 | 70 | 140 | 110 | 70 |
| 160 | 180 | 170 | 55 | 60 | 35 | 30 | 90 | 181 | - | - |
| 200 | 220 | 170 | 60 | 60 | 36 | 30 | 90 | 181 | - | - |



CR = FIJACIÓN CABALLETE.

| Diámetro | A | C | D | E | F | G | H | I | J | K | L | M | N |
|----------|----|----|----|----|----|----|----|-----|----|-----|----|-------|-----|
| 32 | 32 | 10 | 21 | 18 | 31 | 8 | 38 | 51 | 20 | 6.6 | 11 | 25.8 | 1.6 |
| 40 | 36 | 12 | 24 | 22 | 35 | 10 | 41 | 54 | 22 | 6.6 | 11 | 27.80 | 1.6 |
| 50 | 45 | 12 | 33 | 30 | 45 | 12 | 50 | 65 | 24 | 9 | 15 | 31.8 | 1.6 |
| 63 | 50 | 16 | 37 | 35 | 50 | 12 | 52 | 67 | 30 | 9 | 15 | 39.8 | 1.6 |
| 80 | 63 | 16 | 47 | 40 | 60 | 14 | 66 | 86 | 30 | 11 | 18 | 49.8 | 2.5 |
| 100 | 71 | 20 | 55 | 50 | 70 | 15 | 76 | 96 | 38 | 11 | 18 | 59.8 | 2.5 |
| 125 | 90 | 25 | 70 | 60 | 90 | 20 | 94 | 124 | 44 | 14 | 20 | 70 | 3.2 |